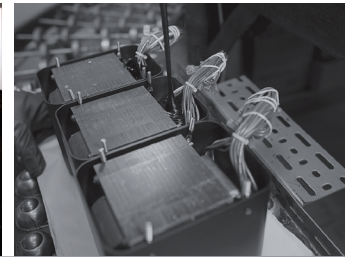


MC302 stereo amplifier

- In a world where products are designed for planned obsolescence, the MC302 stands out as a true value. It will deliver decades of musical enjoyment reflecting both outstanding build quality and advanced technical performance.
- The classic stereo power amplifier at 300 watts per channel.
- New McIntosh chassis and faceplate design featuring larger, easier to read power Wattmeters and new side mounting of the amplifier heat sinks allowing cooler operation.
- Unique McIntosh designed speaker wire binding posts make the perfect connection with all types of speaker wire terminations.
- MC302 is the perfect choice for both dedicated stereo or multi-channel audio systems.



Defined power with realistic musical impact.

McIntosh[®]

LEGENDARY PERFORMANCE™

www.mcintoshlabs.com

MC302 stereo amplifier

Power Output:

300 Watts minimum sine wave continuous average power output per channel with both channels operating.

Output Load Impedance:

Terminals for 8, 4 and 2 ohms

Rated Power Band:

20Hz to 20kHz

Total Harmonic Distortion:

0.005% maximum harmonic distortion at any level from 250 milliwatts to rated power output.

Overall Dimensions (W x H x D):

17-1/2" (44.45cm) x 9-7/16" (23.97cm) (including feet) x 22" (55.88cm) (including front panel, knobs and cables)

Weight:

98 lbs (44.45 kg) net,
131 lbs (59.42 kg) in shipping carton

Exclusive McIntosh Power Assurance System:

A collection of technologies that enhance performance and reliability while protecting the amplifier and loudspeakers.

Power Guard®:

A waveform comparison circuit continuously monitors both input and output signals. Power Guard dynamically adjusts the input level to avoid clipping while preventing harsh sounding distortion.

Sentry Monitor:

Fuse-less short-circuit protection circuit disengages the output stage before current exceeds safe operating level- resets automatically.



Output Autoformer:

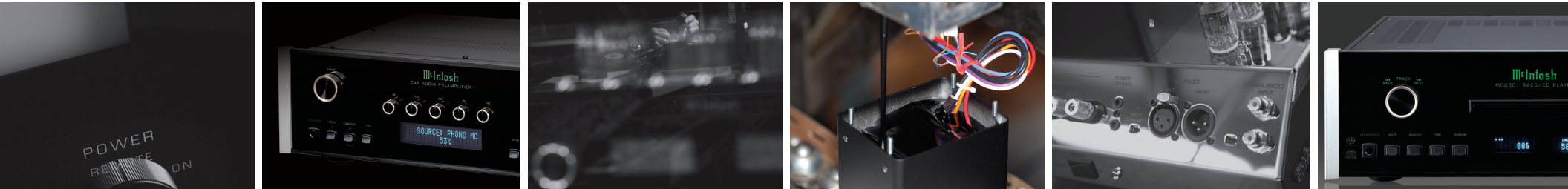
Unique McIntosh technology delivers the full rated amplifier output with the least possible distortion into loudspeaker impedances of 2, 4, or 8 ohms; you get all the power you paid for and the freedom to choose any loudspeaker.

Wattmeter:

Swift, accurate response reveals program peaks so staying within the power limits of your loudspeakers is easy.

For the Consumer's Protection:

In order to ensure the highest level of customer satisfaction, "new" McIntosh products may only be purchased over-the-counter or delivered and installed by an Authorized McIntosh Dealer. McIntosh products that are purchased over the Internet, by phone or mail order are presumed to be "used" and do not qualify for any McIntosh Warranty. McIntosh does not warrant, in any way, products that are purchased from anyone who is not an Authorized Dealer or products that have had their serial number altered or defaced.



Companion Products

The McIntosh C48 Preamplifier, MCD301 SACD/CD Player and the XR200 Loudspeaker are logical companions for the MC302 Stereo Amplifier. Your Authorized Dealer can provide additional information.

To learn more, please call us at 1.800.538.6576.

McIntosh®

LEGENDARY PERFORMANCE™

www.mcintoshlabs.com